

COUNTRY COLLECTIBLES PRESENTS #52
DISTINCTIVE

EXPERTS SAVE YOU \$\$\$
THE BIGGEST VARIETY OF STYLES

Kitchen

SOLUTIONS

BEST ADVICE FROM TOP DESIGNERS

SPECIAL DOUBLE ISSUE!

BEST LOOKS

for 2009

52

BRILLIANT KITCHENS & BATHS

**SPA
BATHS
ON A
BUDGET**

**SEE HOW DIFFERENT
PRODUCTS & MATERIALS
WILL AFFECT YOUR ROOM**

ISSUE #52 SPECIAL DOUBLE ISSUE #52
\$2.99
Mag: 0.81¢, Wkly: 1.48¢
Mag: 50% BWT: 1.00¢
74802 01509 1



PHOTO: BOB LANGRISH/GETTY IMAGES.COM

integrated family spaces

ENGLISH TUDOR GAINS NEW TRADITIONAL KITCHEN AS CENTER FOR KIDS' ACTIVITIES

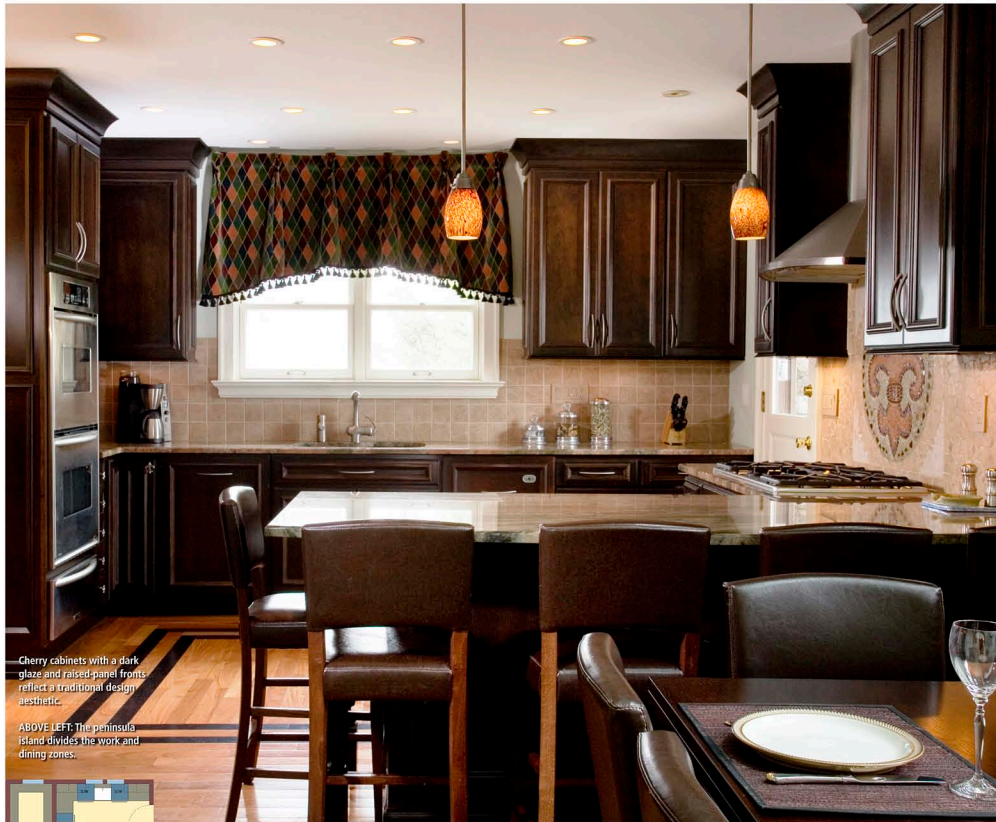
WISH LIST

- She wanted a cozy feeling
- He wanted a warming drawer
- Both wanted the space to provide a hub for kids and access to other rooms

When the owners of an English Tudor house in Cincinnati, Ohio, hired design/build expert Tim Howland, they asked for a new kitchen that would reflect the wife's roots in Louisiana—in particular Bourbon Street, with its French and Cajun design influences. To Howland, that translated into a rich, dark expanse with some light contrasts and a fleur-de-lis tile motif (by mosaic artist Kelly Rogers).

The owners wanted to be able to accommodate their three young children and a constant stream of their children's friends coming into the kitchen for snacks and meals. The room also needed to provide access to a dining room, the front of the house, a family room and a finished basement. Howland gutted the entire space down to the studs and planned the new design with both aesthetics and functionality in mind. He removed a wall that separated the workspace from a breakfast area, as well as the back staircase, gaining extra room for a peninsula that can function as a breakfast ledge and a table for seated meals, as well as a two-story open feel. "There are always children visiting, so the owners needed room to seat a lot of people," Howland says. The main work zone keeps equipment on different levels with generous counter space between and a refrigerator closest to the table and breakfast ledge for convenience. Nearby, a walk-in pantry with window provides ample light and storage for food supplies; a powder room replaced a hall closet to function both for family members and guests.

To create the dark romantic design, Howland's cabinet designer selected Showplace cabinets with raised-panel fronts in cherry, and gave them a dark glaze and pencil-thin satin nickel pulls. Cabinets run to the top of the 8'-high ceiling with deep crown molding that makes the room look taller and more stately. Granite countertops offer a light contrast, as does the pre-engineered Amendoim floor with dark walnut banding, which repeats the dark color of the cabinets. A patterned valance with a diamond motif suits the French part of the equation. Recessed cans are tied into a Lutron RadioRa Home Lighting System that allows the owners to press a button and create a variety of lighting moods.



Cherry cabinets with a dark glaze and raised-panel fronts reflect a traditional design aesthetic.

ABOVE LEFT: The peninsula island divides the work and dining zones.



DESIGNER & BUILDER:
Tim Z. Howland
The Howland Group
17 Laurel Avenue
South Millford, OH 45150
513-347-4704
howland-group.com

CABINET DESIGNER:
Tina Kronke
The Observatory House
12 Observatory Hill
Cincinnati, OH 45208
LOCATION: Cincinnati, OH
DIMENSIONS: 14' x 20'

>>> SPECIAL FEATURES:
Radiant-heated floor; integrated panels on appliances that match cabinetry; Fleur-de-lis tile mosaic design crafted on-site
PRODUCTS USED:
• Countertops: Granite, by Modlich Stoneworks

• Dishwasher: Bosch and KitchenAid Architect Series
• Warming drawer, double ovens: KitchenAid
• Sink, faucet: Franke/Köhler
• Cooktop: KitchenAid Architect Series
• Floor: BR-111, Amendoim
• Backsplashes: Porcelain tile

• Lighting: Lutron Electronics Company, by Matrix Automation
• Cabinets: Showplace, by Observatory House
• Refrigerator/freezer: Sub-Zero
• Paint: Sherwin-Williams



PHOTO: JAMES W. HANCOCK

beautifully durable

A NEW KITCHEN THAT BLENDS THE PAST WITH THE PRESENT AND WILL STAND THE TEST OF TIME

WISH LIST

- Distinctive style
- Functionality for a busy family
- Good relationship between kitchen and adjacent hearth room

When a couple decided to downsize, it wasn't exactly to a small house. Their new house measures 2,600 square feet, and they asked Tim Howland to help build a 1,200-square-foot addition to provide more and better living quarters for them and their 9-year-old twins. The new kitchen, which straddles both new and old sections of the original home, is next to a hearth room; both spaces were designed to look like one large area with the same distressed hardwood

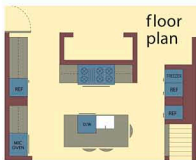
flooring and a similar color palette to link them visually.

The wife, who cooks frequently, wanted an efficient, bright workspace and a place for the family to eat casually at a counter. Howland and his team wanted to blend the past with the present while creating a classic design that would stand the test of time. As a result, the design features a large island with a sink and places for stools. Since the kitchen lacked many windows, the cabinet designer made the room look more open and bright by using white cabinets that run all the way to the top of the 9' ceiling, a design trick that he says extends the eye upward. Calcutta Gold marble tiles along backsplashes are white with hints of gold veins in both subway-tile size and smaller mosaics, while the Bianco Antico on the island complements the white palette. As a contrast, Howland selected a dark stain for island cabinetry, wood countertops around the room's perimeter and chrome fixtures. "This wasn't a modern neighborhood or house, but some of the wife's taste is quite modern; it's good juxtaposition of old and new design choices that work well together," Howland says. "The black cabinetry on the island is also a good idea: When cabinets get dinged, it won't look as scuffed," he says. Edges on the island and perimeter countertops also were varied, "so people would pay attention," Howland says. The same holds true for the detailing above the range, which mimics the glass-fronted cabinets. Boldly painted wall expanses add color and warm the room. Other details include chrome light fixtures, a downdraft behind the range that pops up or stays concealed, and a hand-crafted wooden post and railing.



White cabinets run all the way to the ceiling to extend the eye upward.

ABOVE LEFT: A downdraft behind the range pops up when in use but also can be concealed.



floor plan

BUILDER:
Tim Z. Howland
The Howland Group
17 Laurel Avenue
South Millford, OH 45150
513-340-4704
howland-group.com

ARCHITECT:
Wertz Design
Mike Wertz
10816 Millington Court
Suite 116
Cincinnati, OH 45242
513-745-0420

DESIGNER:
Michele Campbell
Space Expressions

3814 West Street, Suite 210
Cincinnati, OH 45227
513-723-9911

KITCHEN DESIGNER:
Cindy Zeter
The Hyde Park Lumber Co.
3360 Red Bank Road
Cincinnati, OH 45227
513-271-1500

LOCATION: Cincinnati, OH
DIMENSIONS: 12' x 16'

>>> SPECIAL FEATURES:
Hand-hewn post and railing; Dis-
tressed floor; Built-in refrigerator
and beverage unit under stairs

PRODUCTS USED:
• Sink: Franke

- Refrigerators/freezer, dishwasher, cooktop and downdraft hood, micro-wave/convection, warming drawer, double oven: KitchenAid
- Countertops: Island, Bianco Antico granite, by Modich Stoneworks; Perimeter, Handcrafted Hardwood
- Cabinets: Woodharbor, design by Cindy Zeter of The Hyde Park Lumber Company
- Backsplash: Calcutta Gold marble from Kemper Tile & Design Center



PHOTOS: SARA BRIDGEMAN/REINVENTPHOTOGRAPHY.COM

vacation relaxation

ROOM-SIZE SHOWER AND TUB
SUGGEST AN OUTDOOR SANCTUARY

WISH LIST

- Natural/outdooropen look for shower/tub room
- Private water closet room
- Showerheads and body sprays at either side of the shower for multiple use

In doubling the size of their brick cottage to 3,500 square feet, a couple with two young children gained a new muster bedroom, a bathroom and a walk-in closet. For the bathroom, the wife requested a shower without a traditional enclosure—one that would almost make her imagine showering outdoors. Builder Tim Howland developed a clever 10' x 10' solution: It has two glass panels but no formal door, and it contains a large space for standing under the showerhead on one side or beside the body sprays on the other, so that two people can use it simultaneously.

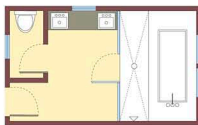
The area also has a generous 6' long tub that sits underneath a window and has ample decking for placing candles, bath gels and plants. To further enhance the attractiveness of the space and give the impression of being outdoors, Howland paved the floor with pebbles that one could actually find in a stream, set in an array of colors containing taupes, whites, browns and blacks.

"During a selection visit at the tile store, my client saw the sample of pebbled tile, took off her shoes and walked on them. She instantly loved them," he says. The pebbles' fine finish makes them comfortable to walk on in bare feet, while the texture provides positive traction. Tub sides, decking and walls are lined in ivory travertine tiles laid in a brick pattern. Niches were included at each shower side for bathing products. The rest of the bathroom continues the natural-colored palette with a vanity constructed from oak and stained in a deep espresso finish. To accommodate the owners' taller height, Howland chose to mount the 9" vessel-type sinks atop the granite on standard height cabinets, thus elevating the overall dimension. Enough space was left for a private water closet, a feature that Howland says more and more of his clients request. Walls were painted a rich brown for contrast; the same color was used in a band around the shower/tub room, since Howland didn't want to run tiles to the ceiling. "That would have simply been too much tile; a stripe of color is just the right accent," he says. Single sconces over the vanity and recessed, low-voltage lighting provide good illumination. Plantation shutters were later installed over windows since the room overlooks the front yard.



Raised vessel sinks are a modern design feature.

ABOVE LEFT: The pebbled floor in the shower room gives the owners the feeling of being outdoors.



floor plan

DESIGNER & BUILDER:
Tim X. Howland
The Howland Group
17 Laurel Avenue
South Millford, OH 45150
513-347-4704
howland-group.com

ARCHITECT:
Ryan Duebber, AIA
RDA Architecture, LLC
6050 Dryden Avenue
Cincinnati, OH 45213
513-351-5141
rda-architecture.com

LOCATION: Cincinnati, OH

DIMENSIONS: 11' x 18'

>>> SPECIAL FEATURES:
Tub is located in shower room; Salad-pebbled creek floor tile

PRODUCTS USED:

- Tub: Jacuzzi® Amiga Pure Air
- Sinks: DecoLav

- Cabinetry: Kraftmaid, oak with espresso stain
- Fittings: Kohler, Bancroft line
- Countertops: Venetian Gold Granite by Modich Stoneworks
- Floor, walls, tub decking: Ivory travertine, with distressed edges, Florida Tile Co.
- Shower floor: Sand Pebbles, Florida Tile Co.
- Windows: Pella Architect Series
- Paint: Sherwin-Williams